



Jordan fishwick

22 Davehall Avenue, SK9 5NE
Guide Price £899,950



Davehall Avenue Wilmslow SK9 5NE

Guide Price £899,950




This significantly extended five bedroom fully modernised detached bay fronted traditional property is positioned at the head of a cul-de-sac on Davehall Avenue, centrally located for Wilmslow town centre off Altricham Road. Benefiting from an in and out block paved driveway which provides off-road parking for several vehicles and a mature hedgerow providing privacy. Internally the accommodation comprises of an entrance hallway with staircase leading to the first floor accommodation. A set of black Crittal glazed double doors lead to the impressive and spacious open plan kitchen/diner and family living space. This spectacular room boasts an impressive modern and quality fitted kitchen with central island unit and several quality integrated appliances. A set of bifold doors provides a source of natural light, whilst leading to the rear garden. A separate utility area can be both accessed via this highly sociable kitchen dining space and via the entrance hallway. There is a well proportioned and separate formal dining room with bay fronted window and traditional fireplace. A third reception room, currently used as a living room, is located to the rear of the property with a rear garden outlook. An internal set of double doors leads through to a versatile extension. This extra reception room could make a perfect gym or home office giving extra versatility and provides additional access to the rear garden. Finally to the ground floor there is a downstairs WC with shower. Located on the first floor there are four well proportioned double bedrooms and a fifth single bedroom. One bedroom boasts a modern ensuite shower room and the family bathroom has been fitted with a modern and stylish suite which completes the internal accommodation. The internal accommodation provides great flexibility catering for a variety of needs and for a growing family.

Externally to the rear the garden is enclosed to the perimeter with patio and is laid mainly to lawn. There is a useful garden shed providing additional storage whilst to the side of the property there is a secluded additional area ideal for a caravan or extra parking.



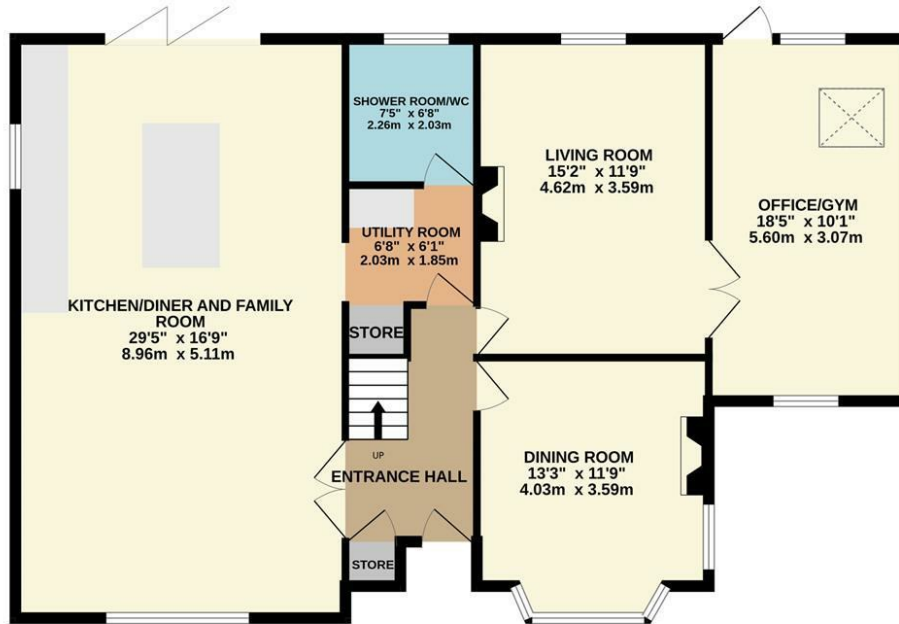
- Spacious Detached Property
- Extended and Modernised
- Five Bedrooms
- Three bathroom/Shower rooms
- Excellent Location
- Off Road Parking
- Garden to Rear
- Amazing Kitchen diner and Living space



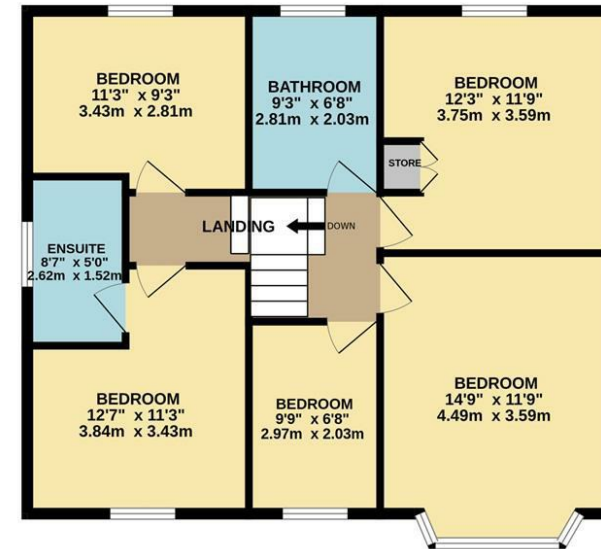
Energy Efficiency Rating		
	Current	Potential
Very energy efficient - lower running costs		
(92 plus) A		
(81-91) B		
(69-80) C		
(55-68) D	59	67
(39-54) E		
(21-38) F		
(1-20) G		
Not energy efficient - higher running costs		
England & Wales	EU Directive 2002/91/EC 	



GROUND FLOOR



1ST FLOOR



Measurements are approximate. Not to scale. Illustrative purposes only
Made with Metropix ©2025



These particulars are believed to be accurate but they are not guaranteed and do not form a contract. Neither Jordan Fishwick nor the vendor or lessor accept any responsibility in respect of these particulars, which are not intended to be statements or representations of fact and any intending purchaser or lessee must satisfy himself by inspection or otherwise as to the correctness of each of the statements contained in these particulars. Any floorplans on this brochure are for illustrative purposes only and are not necessarily to scale.

Offices at: Chorlton, Didsbury, Disley, Hale, Glossop, Macclesfield, Manchester Deansgate, Manchester Whitworth Street, New Mills, Sale, Wilmslow and Withington

36-38 Alderley Road, Wilmslow SK91JX
01625 532000

wilmslow@jordanfishwick.co.uk
www.jordanfishwick.co.uk